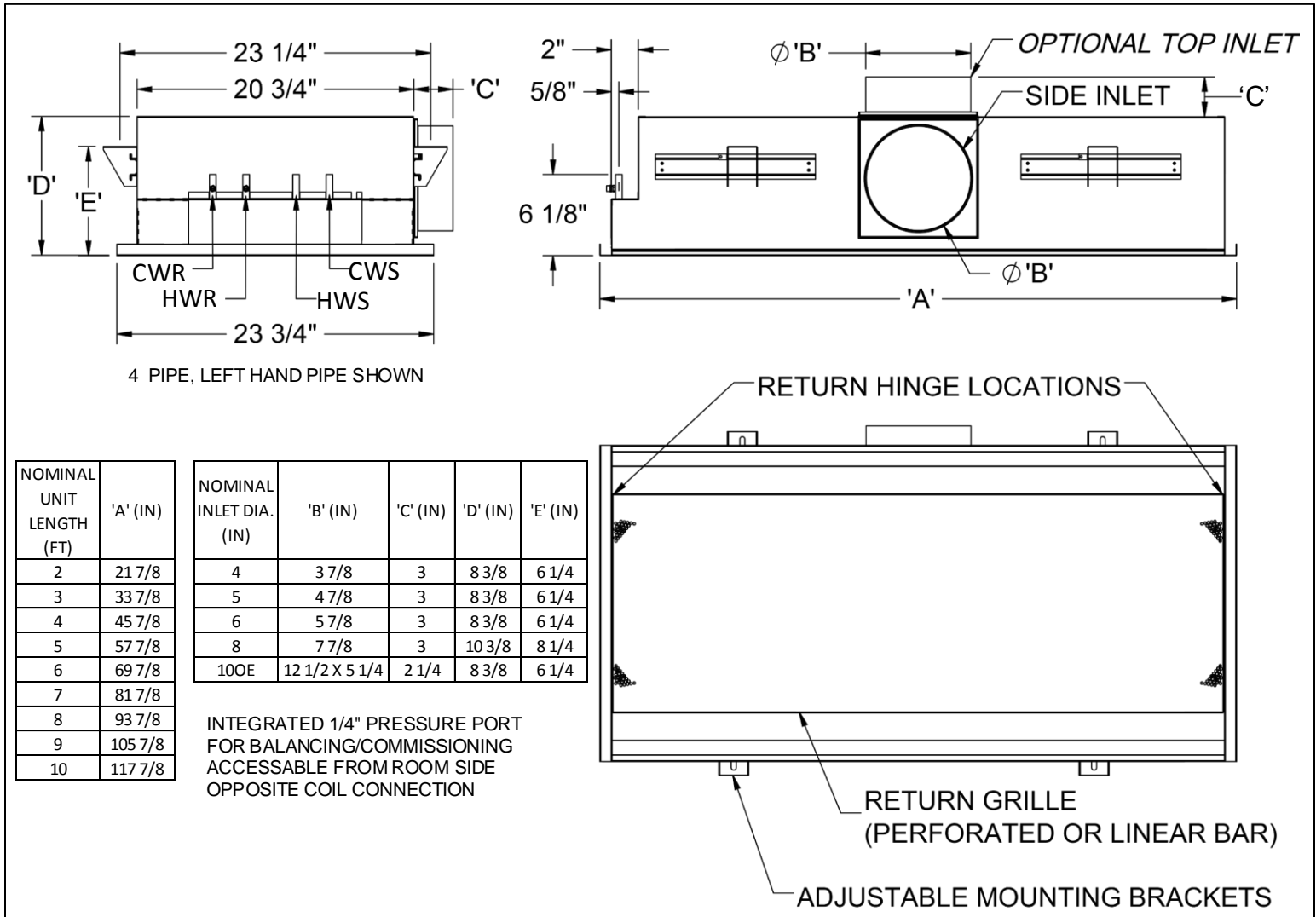


CBAL 24 • Linear Ceiling Mounted Chilled Beam • 1-Way & 2-Way Discharge • Horizontal Coil


General Description

- 24 inch wide, linear active chilled beam diffuser, available with 1-way or 2-way air distribution.
- Designed to fit into standard 24 inch ceiling grids, available with different borders.
- 2 to 10 feet chilled beam length in 1 foot increment.
- 2 pipe or 4 pipe coil configurations.
- Casing manufactured with galvanealed G90, 20 gauge sheet metal. Mechanically sealed, leak resistant construction.
- Coil with air vent and 1/2" water connection, available with sweat or threaded connection.

- Rails with adjustable mounting brackets are provided, quantity varies per unit length.
- 4, 5, 6 or 8 inch round and 10 inch oval inlet connection, located either on the side or top.
- Return face panel assembly is hinged, on both sides, allowing to swing open from either side or to be completely removed and provide easy access to internal components.
- Return face panel assembly available with round perforation or linear bar grille.
- Exterior face, border elements and visible internal components are painted in color of choice. Paint is powder coat, a mix of polyester and epoxy.

This Submittal is meant to demonstrate general dimensions and information of this product. The drawings are not meant to detail every aspect of the product. Drawings are not to scale. Titus reserves the right to make changes without written notice.

All rights reserved. No part of this work may be reproduced or transmitted in any form or by any means, electronic or mechanical, including photocopying and recording, or by any information storage retrieval system without permission in writing from Air Distribution Technologies Inc.

Basic Unit Configuration

Beam Width
(nominal- in)

24

Unit Length (nominal - ft)

2 3 4

7 5 6

8 9 10

Throw Pattern

1 - Way towards inlet

1 - Way away from inlet

2 - Way

Nozzle Configuration

B1 B2

B3 B4

Primary Air Inlet
Diameter Connection
(inch)

5 6 8 10*

**Note: 10" is equivalent oval*

Primary Air Inlet
Orientation

Side Top

Border Type

Lay In

Tegular 9/16" (NT)

Tegular 15/16" (DF)

Face Pattern

Circular Perforation

Linear Bar Grille

Coil Type - Water
Side Connection

2 Pipe - Left Hand

2 Pipe - Right Hand

4 Pipe - Left Hand

4 Pipe - Right Hand

Coil Connection -Type

1/2 in SWEAT

1/2 in MNPT

Flexible Connections

12" Stainless Steel Flex Hose Connection

18" Stainless Steel Flex Hose Connection

24" Stainless Steel Flex Hose Connection

Exposed Face Finish
Color

White #26

Black #84

Insulation

1/2 in EcoShield
External Plenum
Insulation

Unit Options

Removable
Coil Mounted
Lint Screen

Unit Option Details

OPTIONAL TOP INLET

WATER COIL CONNECTIONS (4 PIPE, RIGHT HAND SHOWN)

ADJUSTABLE MOUNTING BRACKETS
USE 3/8" THREADED RODS TO SUSPEND TO CEILING
(x4 L = 2' TO 6')
(x6 L = 7' TO 10')

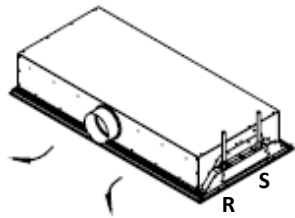
LB - LINEAR BAR GRILLE **CB - CIRCULAR PERFORATION**

BORDER TYPE

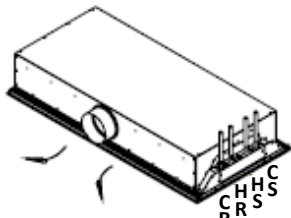
TEGULAR 9/16" **TEGULAR 15/16"** **LAY IN**

NOTE:
HAND OF UNIT IS DETERMINED BY FACING THE HORIZONTAL AIR INLET CONNECTION AND BY THE LOCATION OF THE COOLING WATER SUPPLY CONNECTION

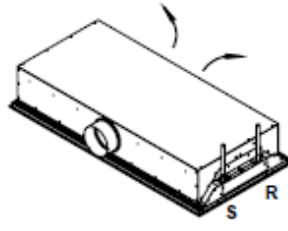
Inlet, Discharge and Piping Configuration



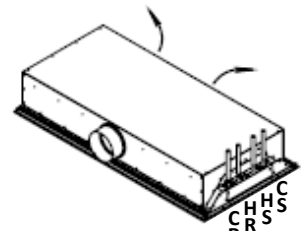
SIDE INLET
1 WAY 2 PIPE
RIGHT HAND
AIR FLOW FRONT



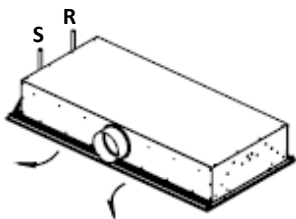
SIDE INLET
1 WAY 4 PIPE
RIGHT HAND
AIR FLOW FRONT



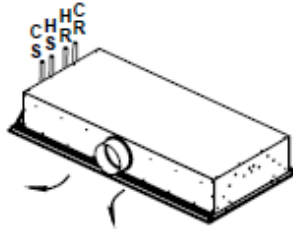
SIDE INLET
1 WAY 2 PIPE
RIGHT HAND
AIR FLOW BACK



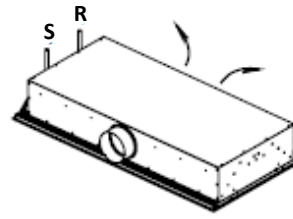
SIDE INLET
1 WAY 4 PIPE
RIGHT HAND
AIR FLOW BACK



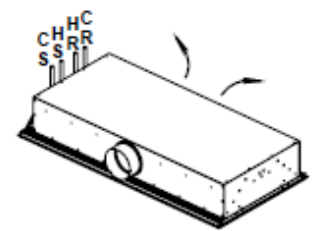
SIDE INLET
1 WAY 2 PIPE
LEFT HAND
AIR FLOW FRONT



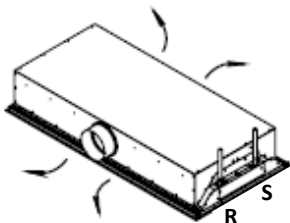
SIDE INLET
1 WAY 4 PIPE
LEFT HAND
AIR FLOW FRONT



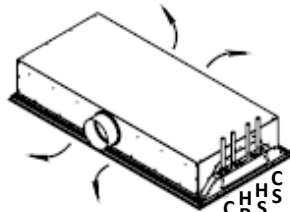
SIDE INLET
1 WAY 2 PIPE
LEFT HAND
AIR FLOW BACK



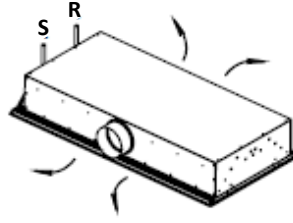
SIDE INLET
1 WAY 4 PIPE
LEFT HAND
AIR FLOW BACK



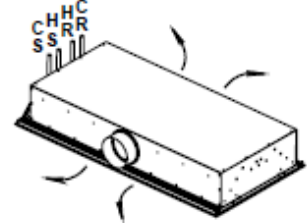
SIDE INLET
2 WAY 2 PIPE
RIGHT HAND



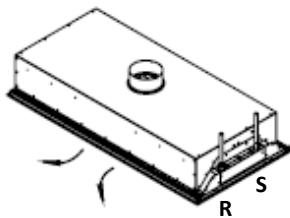
SIDE INLET
2 WAY 4 PIPE
RIGHT HAND



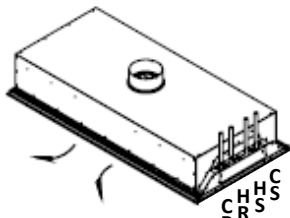
SIDE INLET
2 WAY 2 PIPE
LEFT HAND



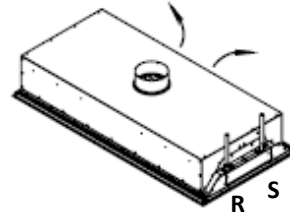
SIDE INLET
2 WAY 4 PIPE
LEFT HAND



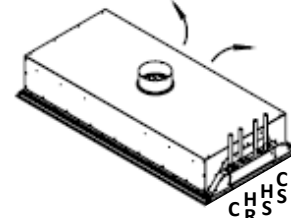
TOP INLET
1 WAY 2 PIPE
RIGHT HAND
AIR FLOW FRONT



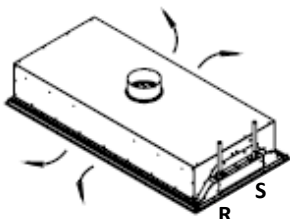
TOP INLET
1 WAY 4 PIPE
RIGHT HAND
AIR FLOW FRONT



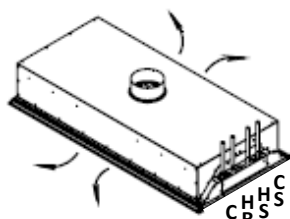
TOP INLET
1 WAY 2 PIPE
RIGHT HAND
AIR FLOW BACK



TOP INLET
1 WAY 4 PIPE
RIGHT HAND
AIR FLOW BACK



TOP INLET
2 WAY 2 PIPE
RIGHT HAND



TOP INLET
2 WAY 4 PIPE
RIGHT HAND

R - Return S - Supply;

HR - Heating Return HS - Heating Supply;

CR - Cooling Return CS - Cooling Supply